

# ***Analysis of Multimodal Capacity Expansion***

*Using NVRTA's Regional and Local Distribution Revenues*

*May 11, 2023*



Presented by:  
Sree Nampoothiri, PhD., AICP., Sr. Transportation Planner  
Northern Virginia Transportation Authority



# Purpose



1. Provide new insights regarding how NVTA's revenues are used for multimodal infrastructure enhancements through a comprehensive and consistent analysis of added linear infrastructure (lane miles).
2. Complement project status information shown on NVTA's NoVA Gateway dashboard.



# Scope of the Analysis



- Modes analyzed:
  - Active Transportation, which includes:
    - Bike-only facilities
    - Pedestrian-only facilities
    - Shared bike/pedestrian facilities
  - Roadway
  - Dedicated Transit Lane
- Multimodal capacity expansion considered:
  - Projects that add NEW linear infrastructure



# Scope of the Analysis



- Both Regional Revenues (70%) and committed Local Distribution Revenues (30%) are considered

Revenue breakdown	Funding years	Projects with new added linear feature/ Total projects	Funding on projects with new added linear feature/Total funding
Regional Revenues (70%)	FY2014-2027	50 / 122	\$1.98B / \$3.121B
Local Distribution Revenues (30%)	FY2014-2022	89 / 257	\$0.20B / \$0.615B
<b>Total Investments</b>		<b>139 / 379</b>	<b>\$2.18B / \$3.736B</b>

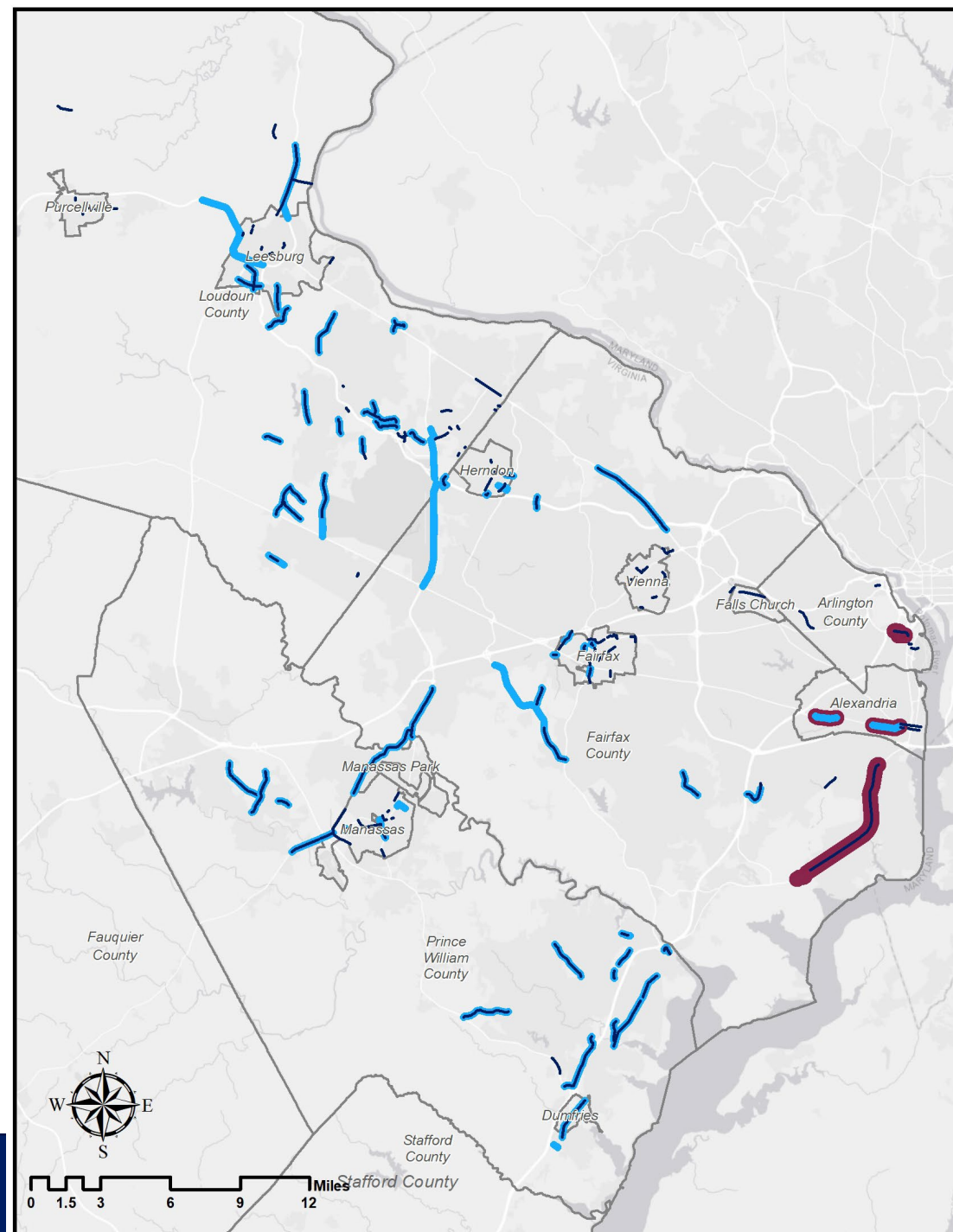
- All 9 member jurisdictions and the 5 towns are included in the analysis



# Analytical Approach



- Project data collated by NVTA staff using NVTA's project records. e.g., NVTA funding programs, Joint Commission on Transportation Accountability (JCTA) reports
- Cross-verified with latest information on jurisdictional project websites
- GIS-based analysis to calculate linear infrastructure features by NVTA staff
- Project data verified by jurisdictional staff
- Data synthesis and internal review



- Active Transportation
- Roadway
- Dedicated Transit Lane



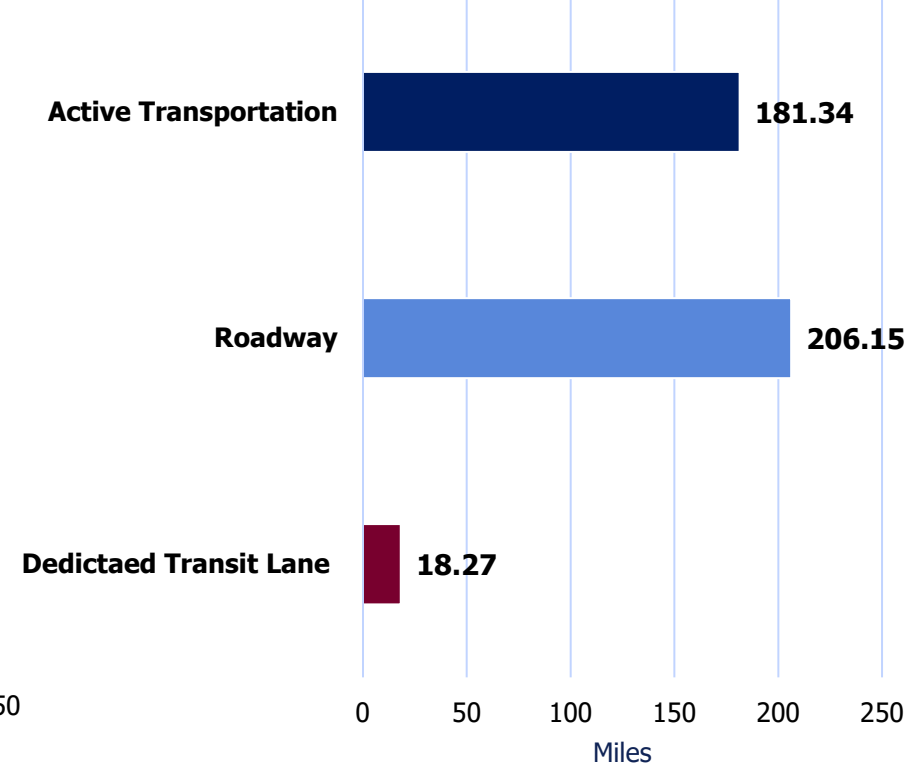
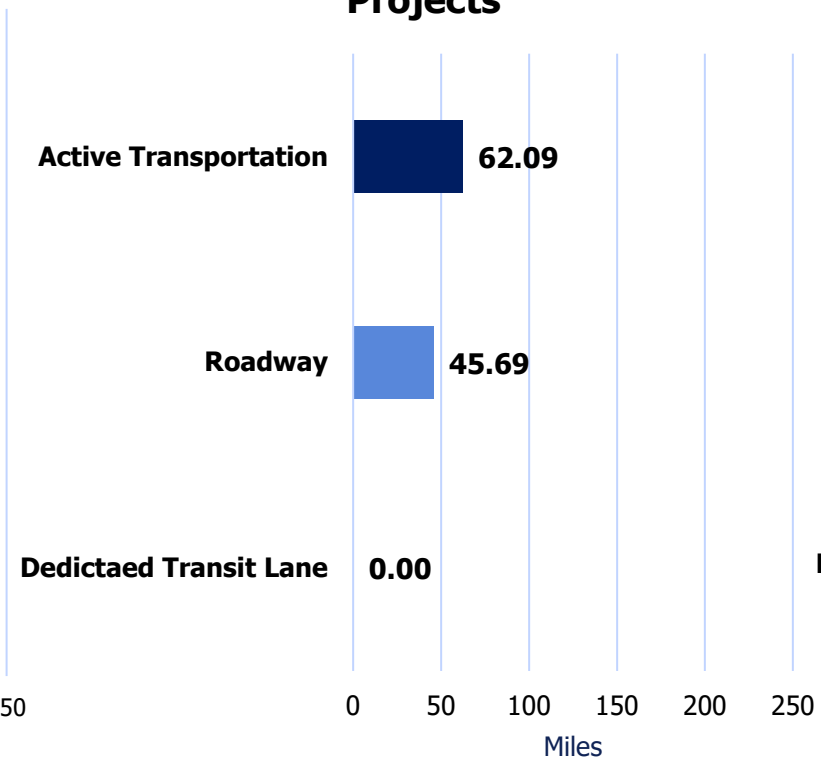
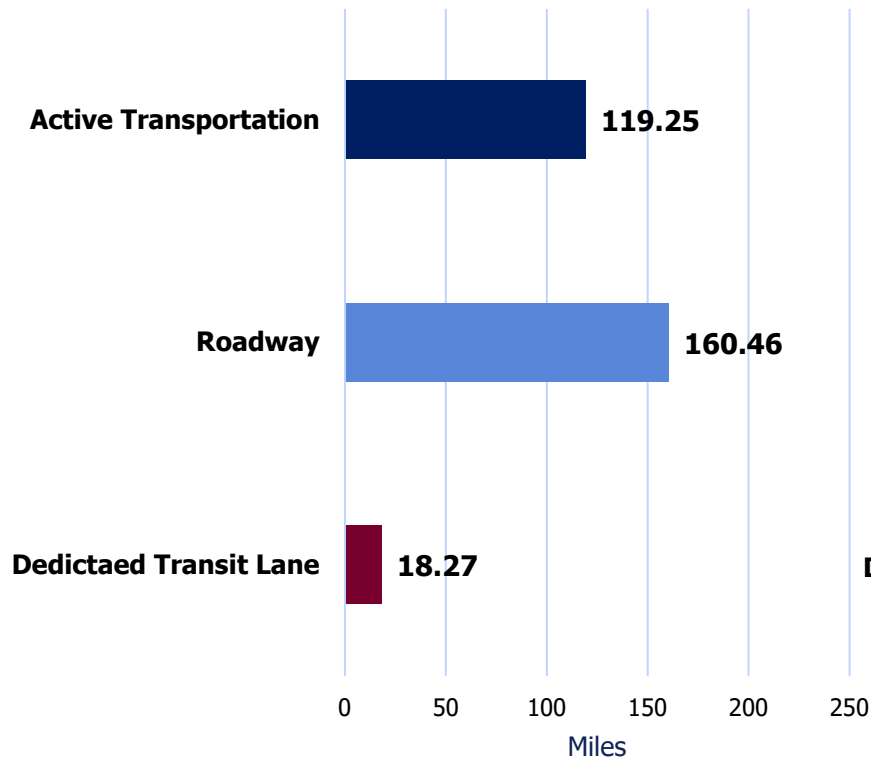
# Added Multimodal Linear Feature (Lane Miles)



### 70% Regional Revenue Projects

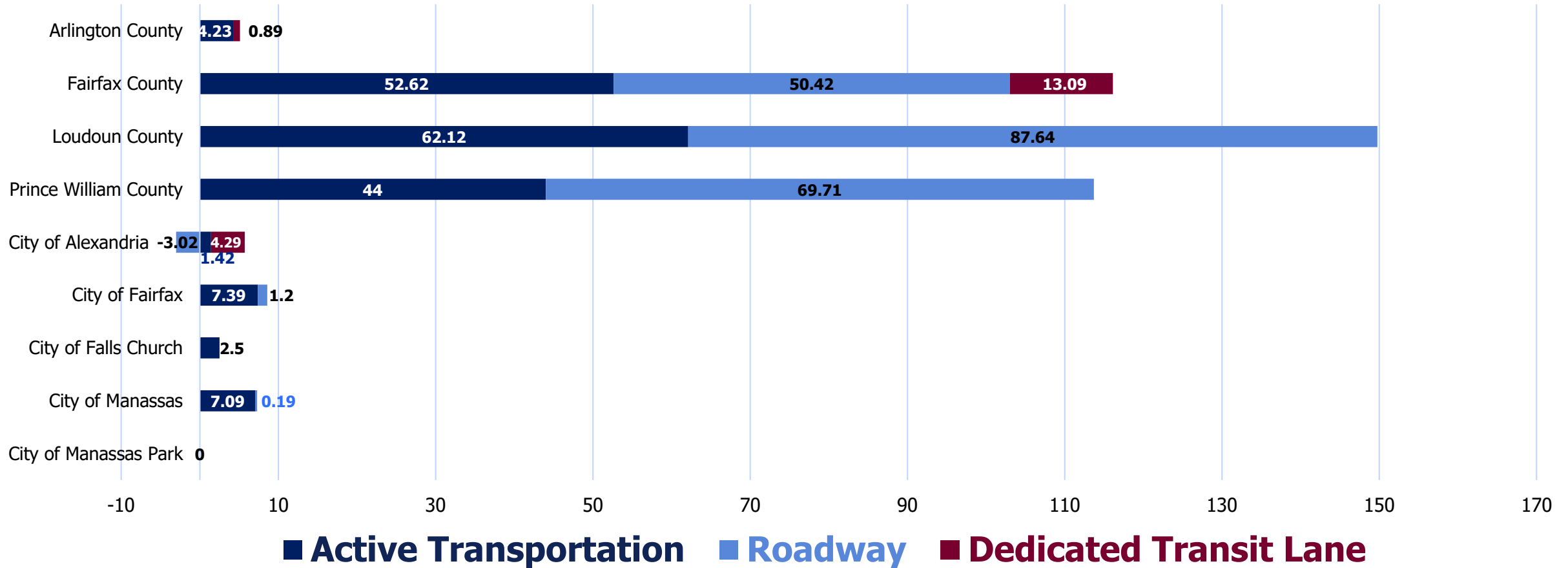
### 30% Local Distribution Revenue Projects

### All NVRTA Funded Projects





# All NVRTA-funded Projects: Added Multimodal Linear Features (Lane Miles) by Jurisdiction







# Key Takeaways



NVTA's and member jurisdictions' investments in multimodal options is key to ensuring a balanced transportation network that reflects the needs of a diverse region, and in meeting NVTA's goals and Core Values.

- NVTA's Regional Revenues (70%) and Local Distribution Revenues (30%) are being used by member jurisdictions (including towns) to add multimodal linear transportation infrastructure.
- Added active transportation/dedicated transit infrastructure lane miles are approximately equal to the number of added roadway lane miles.
- This analysis will be incorporated to NoVA Gateway dashboard enhancements in FY2024.