

Analysis of Multimodal Capacity Expansion

Using NVTVA's Regional and Local Distribution Revenues

May 11, 2023



Presented by:
Sree Nampoothiri, PhD., AICP., Sr. Transportation Planner
Northern Virginia Transportation Authority



Purpose



1. Provide new insights regarding how NVTA's revenues are used for multimodal infrastructure enhancements through a comprehensive and consistent analysis of added linear infrastructure (lane miles).
2. Complement project status information shown on NVTA's NoVA Gateway dashboard.



Scope of the Analysis



- Modes analyzed:
 - Active Transportation, which includes:
 - Bike-only facilities
 - Pedestrian-only facilities
 - Shared bike/pedestrian facilities
 - Roadway
 - Dedicated Transit Lane
- Multimodal capacity expansion considered:
 - Projects that add NEW linear infrastructure



Scope of the Analysis



- Both Regional Revenues (70%) and committed Local Distribution Revenues (30%) are considered

Revenue breakdown	Funding years	Projects with new added linear feature/ Total projects	Funding on projects with new added linear feature/Total funding
Regional Revenues (70%)	FY2014-2027	50 / 122	\$1.98B / \$3.121B
Local Distribution Revenues (30%)	FY2014-2022	89 / 257	\$0.20B / \$0.615B
Total Investments		139 / 379	\$2.18B / \$3.736B

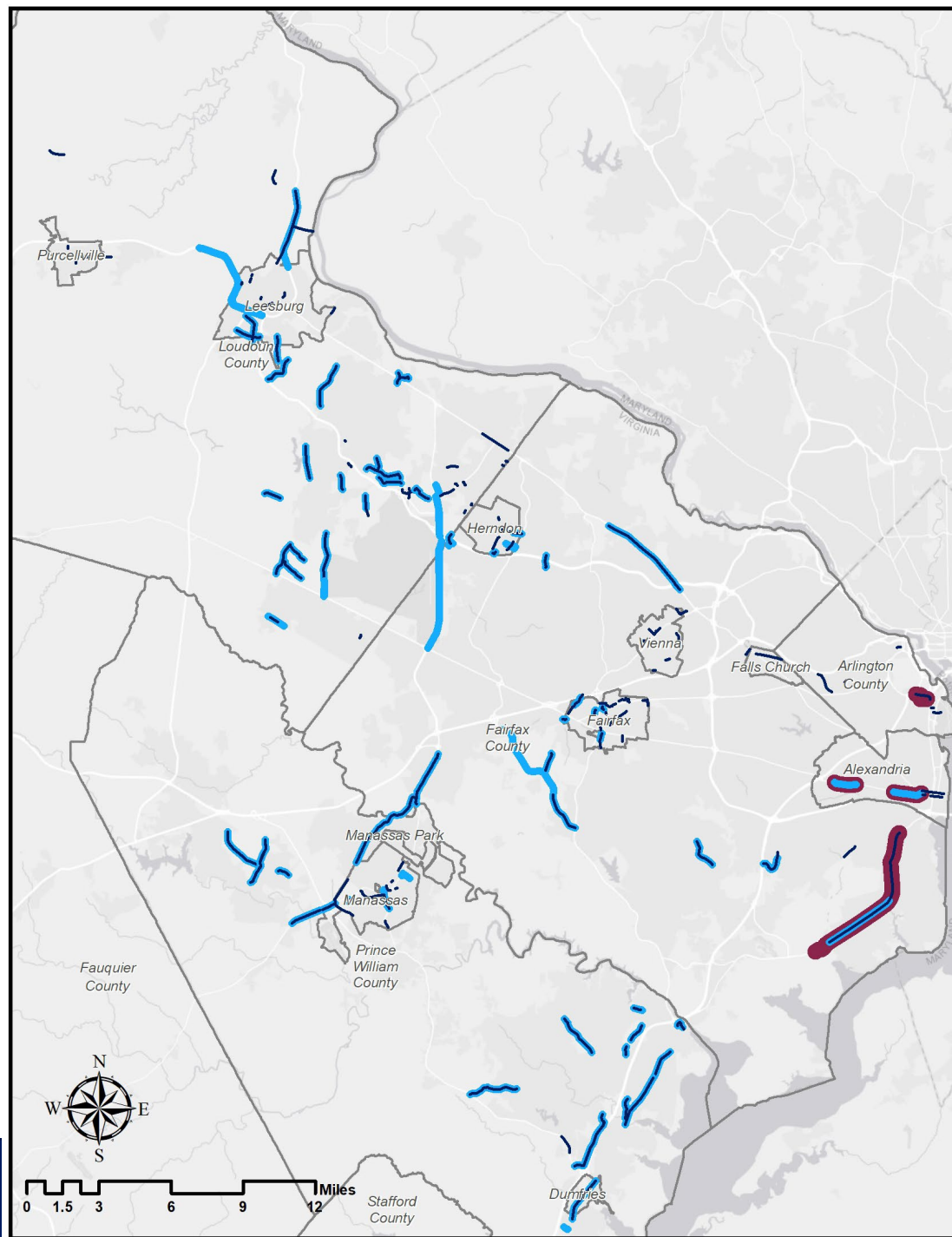
- All 9 member jurisdictions and the 5 towns are included in the analysis



Analytical Approach



- Project data collated by NVTA staff using NVTA's project records. e.g., NVTA funding programs, Joint Commission on Transportation Accountability (JCTA) reports
- Cross-verified with latest information on jurisdictional project websites
- GIS-based analysis to calculate linear infrastructure features by NVTA staff
- Project data verified by jurisdictional staff
- Data synthesis and internal review



- Active Transportation
- Roadway
- Dedicated Transit Lane



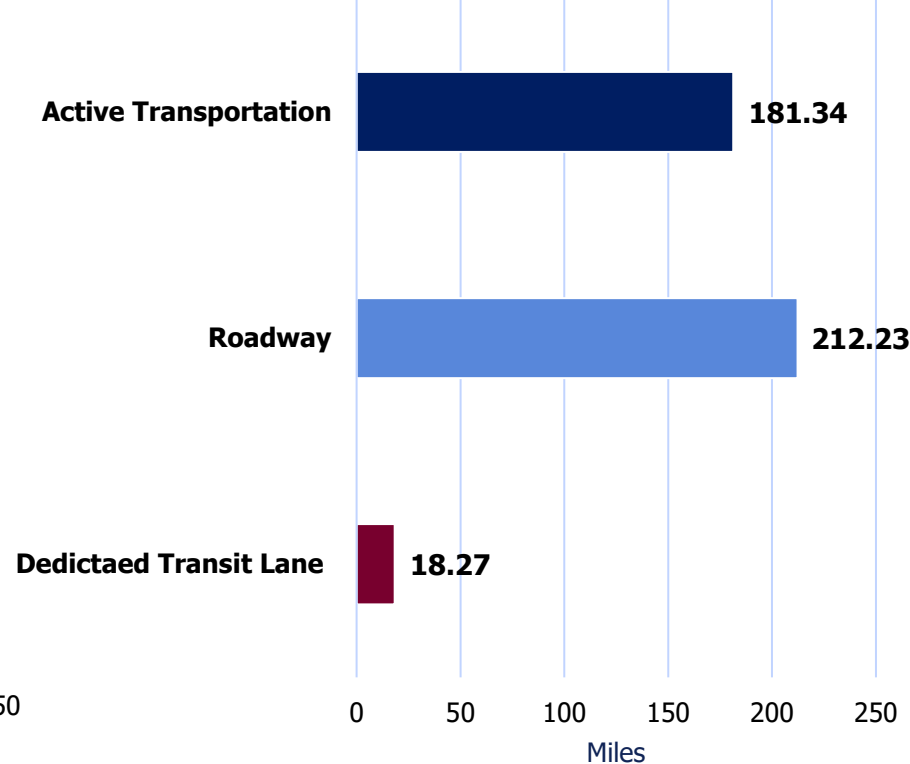
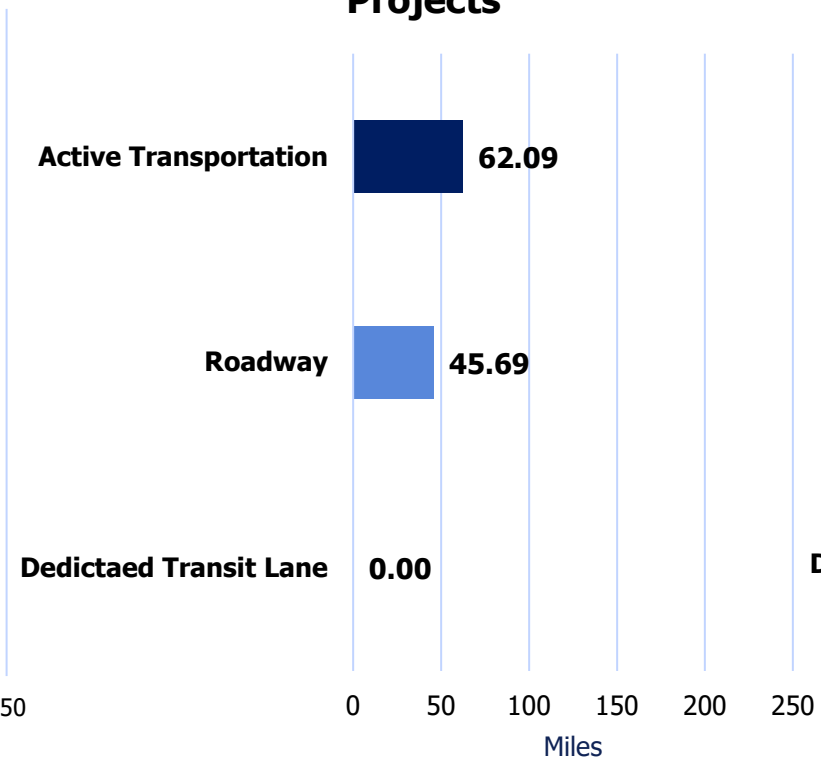
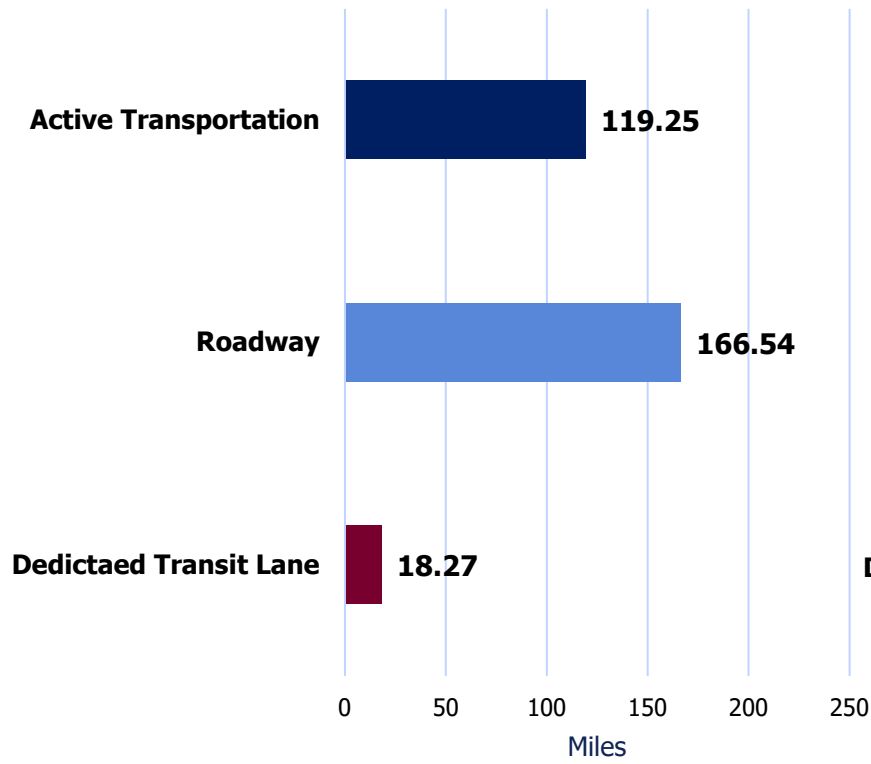
Added Multimodal Linear Feature (Lane Miles)



70% Regional Revenue Projects

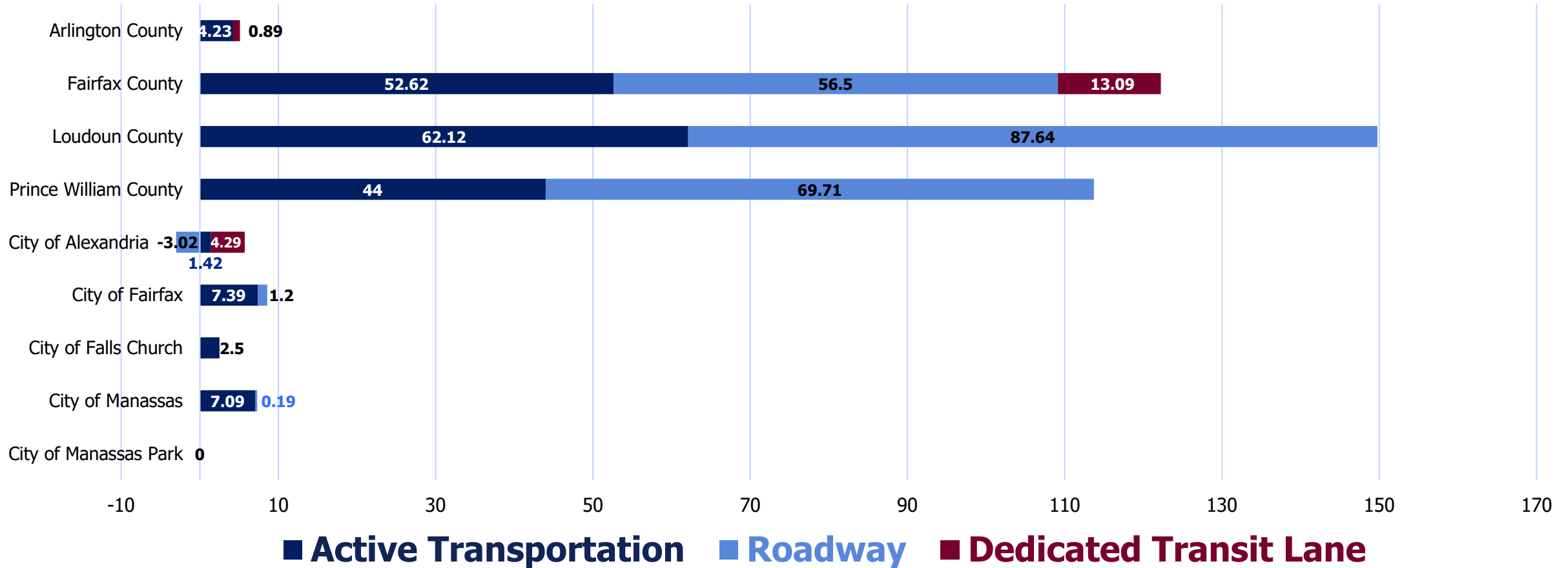
30% Local Distribution Revenue Projects

All NVTA Funded Projects





All NVTA-funded Projects: Added Multimodal Linear Features (Lane Miles) by Jurisdiction





Key Takeaways



NVTA's and member jurisdictions' investments in multimodal options is key to ensuring a balanced transportation network that reflects the needs of a diverse region, and in meeting NVTA's goals and Core Values.

- NVTA's Regional Revenues (70%) and Local Distribution Revenues (30%) are being used by member jurisdictions (including towns) to add multimodal linear transportation infrastructure.
- Added active transportation/dedicated transit infrastructure lane miles are approximately equal to the number of added roadway lane miles.
- This analysis will be incorporated to NoVA Gateway dashboard enhancements in FY2024.