



## Northern Virginia Transportation Authority

March 23, 2017

Susan Shaw, P.E., Megaprojects Director  
Virginia Department of Transportation

# 66 Outside the Beltway Project Scope

- Multimodal improvements to 22.5 miles of the I-66 Corridor
- 2 express lanes in each direction from I-495 (Capital Beltway) to Gainesville (University Boulevard)
- 3 general purpose lanes in each direction
- New transit service and park-and-ride lots
- Safety and operational improvements at key interchanges



# Key Business Terms

**Concession Term:** 50 years

**Financing:**

- Developer to finance the Project at its own cost and risk
- Developer to fund annual transit payment
- Developer to provide a Concession Fee

**Permits:**

- VDOT to obtain required NEPA approvals, CTB approvals, and approvals by FHWA
- Developer responsible for all other permits and government approvals, and any required reevaluation of NEPA approvals as a result of ATCs

**Design and Construction:**

- Fixed priced contract

**Operation and Maintenance (O&M):**

- Developer responsible for O&M of the express lanes, including snow and ice removal
- VDOT responsible for operation and maintenance of GP lanes



# Agreement Signed December 2016

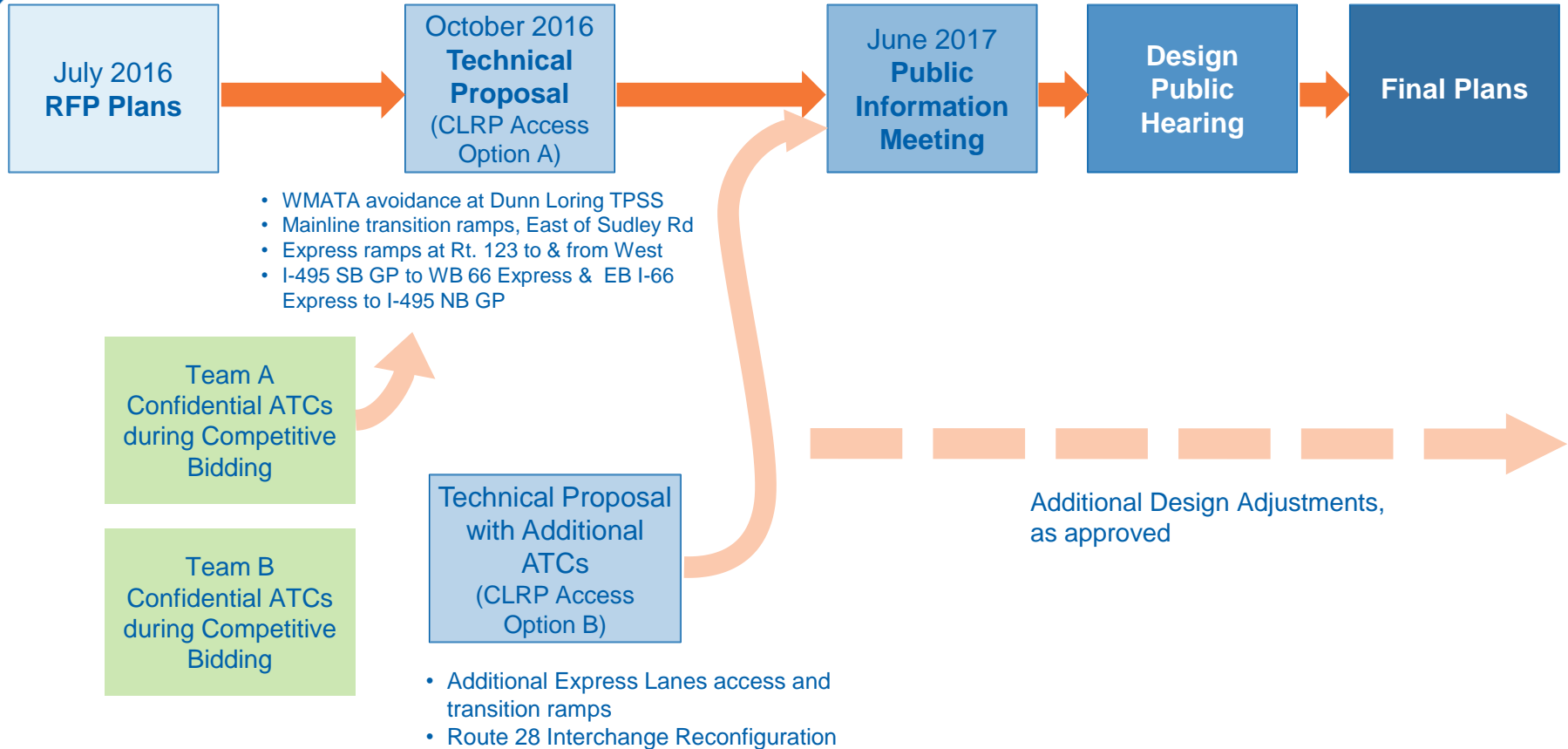
- Best value proposal
- **Express Mobility Partners**
  - **Equity Investors**
    - Cintra Global LTD, Meridiam Infrastructure North American Fund II
  - **Design-Build Contractors**
    - Ferrovial Agroman US Corp, Allan Myers VA, Inc.
- \$2.3 billion construction project

## Other Benefits to the Commonwealth

- \$500M now available for additional improvements to the I-66 Corridor subject to Virginia Code ( § 33.2-1528)
- \$300M will return to the Northern Virginia Transportation Authority for other key regional projects
- \$300M will return to the High Priority Project Program in SMART SCALE for statewide competition



# Moving to Final Design Alternative Technical Concept Process



# Public Outreach: What's Next

## Stakeholder Coordination

- Stakeholder Technical Advisory Group and Coordination with localities: April 2017
- Elected Officials and Media Briefing: May 2017
- One-on-One Briefings with Directly Affected Elected Officials: April and May 2017
- Community and Stakeholder Briefings: May and June 2017

## Public Information Meetings: June 2017

## Design Public Hearings: Fall 2017

## Construction Kick-off: Fall 2017

## Construction Communications Program: Fall 2017- Summer 2022

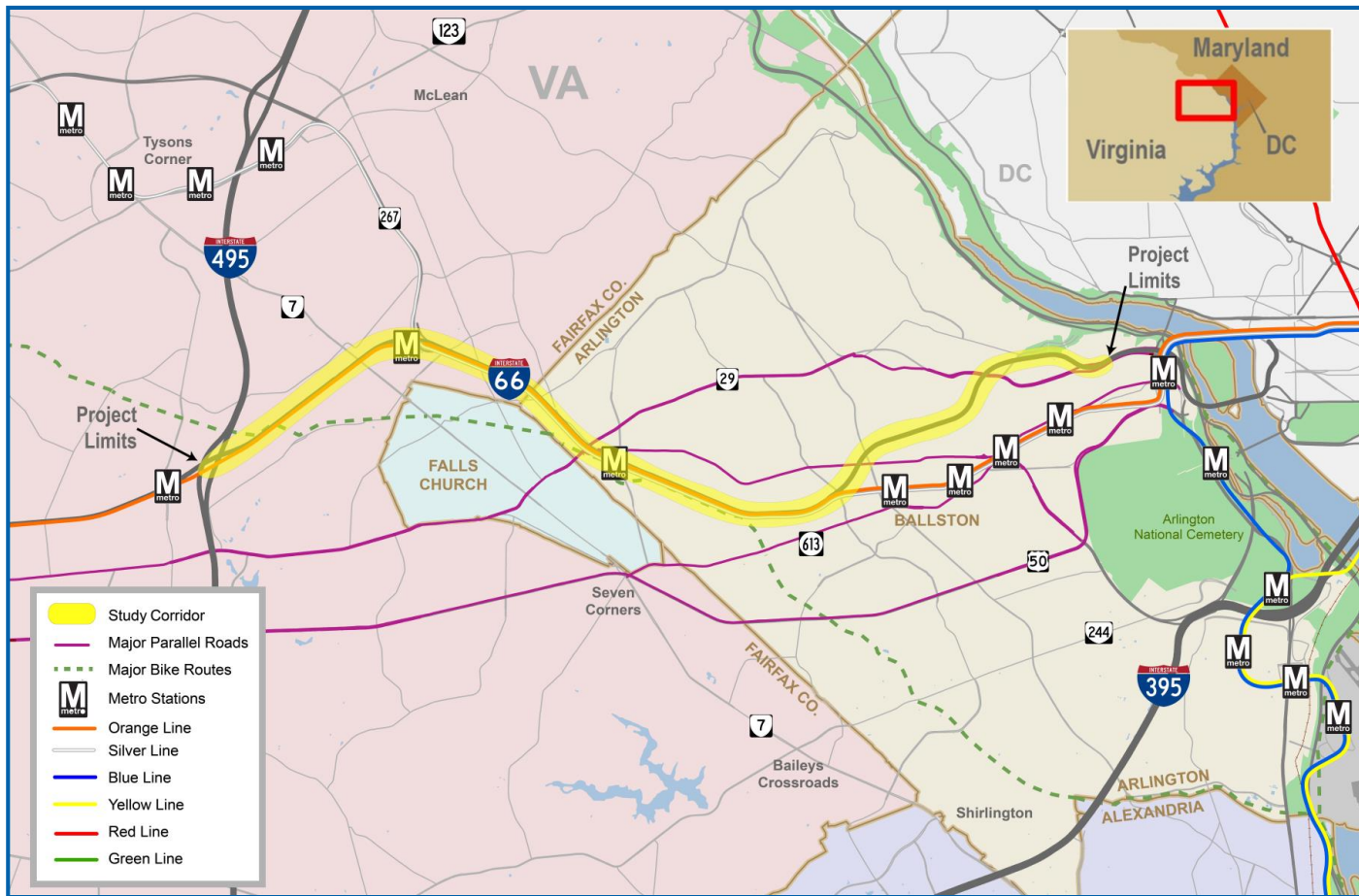
## Express Lanes Marketing and Information Campaigns



# Key Milestones

Activities	Dates
Advance Design Plans, Consider ATCs	January 2017 – Mid 2017
Public Information Meetings	June 2017
Financial Close	July 2017
Design Public Hearing	Fall 2017
Begin Construction	Fall 2017
Right of Way Acquisition	Fall 2017
Park and Ride Milestone Date (960 Parking Spaces near Gainesville)	<b>March 2019</b>
Route 28 Signalization Date (Remove 4 Traffic Signals from Route 28)	<b>February 2020</b>
Begin Tolling	<b>July 2022</b>
Project Completion Date	<b>August 2022</b>

# 66 Inside the Beltway Program Area Map





# 66 Commuter Express Program Scope

## Tolling during weekdays, peak hours, peak directions

- Eastbound: 5:30 a.m. – 9:30 a.m.
- Westbound: 3:00 p.m. – 7:00 p.m.
- HOV2+ toll free in 2017, HOV3+ toll free when Express Lanes open on I-66 outside the Beltway
- All vehicles using the lanes during tolling periods must have an E-ZPass or E-ZPass Flex, if they are HOV, mounted in vehicle

## Multimodal program funded by toll revenue

# 66 Commuter Express Tolling Construction Update

## Construction Activities:

- Eight overhead electronic toll collection gantries on I-66
- Approximately 125 signs along I-66 and local roads approaching I-66

## Construction Status:

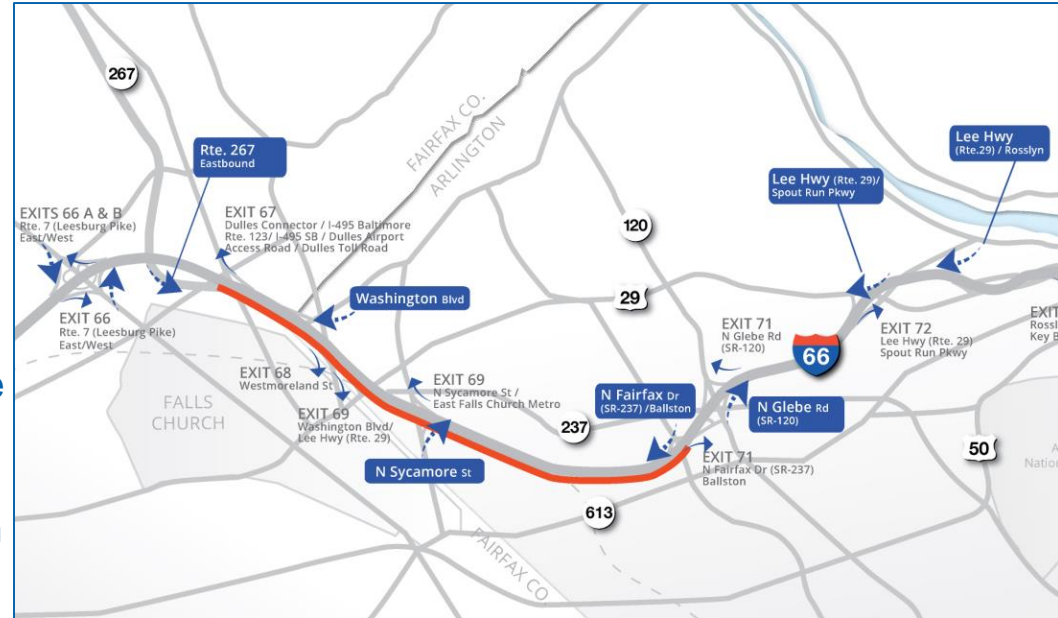
- All gantries have been installed
- 13 of 22 overhead sign foundations installed
- 4 of 22 overhead sign structures installed
- 95% of ground mounted sign foundations completed



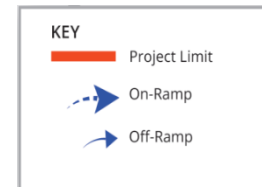
# I-66 Eastbound Widening Dulles Connector Road to Fairfax Drive

## Major Components

- Widening 4 miles of I-66 EB from two to three lanes
- 11,480 linear feet of noise walls
- New W&OD Trail pedestrian and bicycle bridge over U.S. Route 29 (Lee Highway)
- Off-ramp improvements at Washington Boulevard and Glebe Road



Tolling will continue through construction



# Public Outreach: What's Next

## 66 Commuter Express Outreach: 2017

- Advertising campaign (radio, newspaper, online and social media ads, bus exterior advertising and gas pump toppers)
- Media outreach (news releases, press events)
- Community outreach (pop-up events, community festivals, HOA/civic group briefings)
- Customer website

## 66 Eastbound Widening Outreach: Spring 2017

- Public workshops for design of new W&OD Trail Pedestrian and Bicycle Bridge: April 5, 2017 and early May 2017



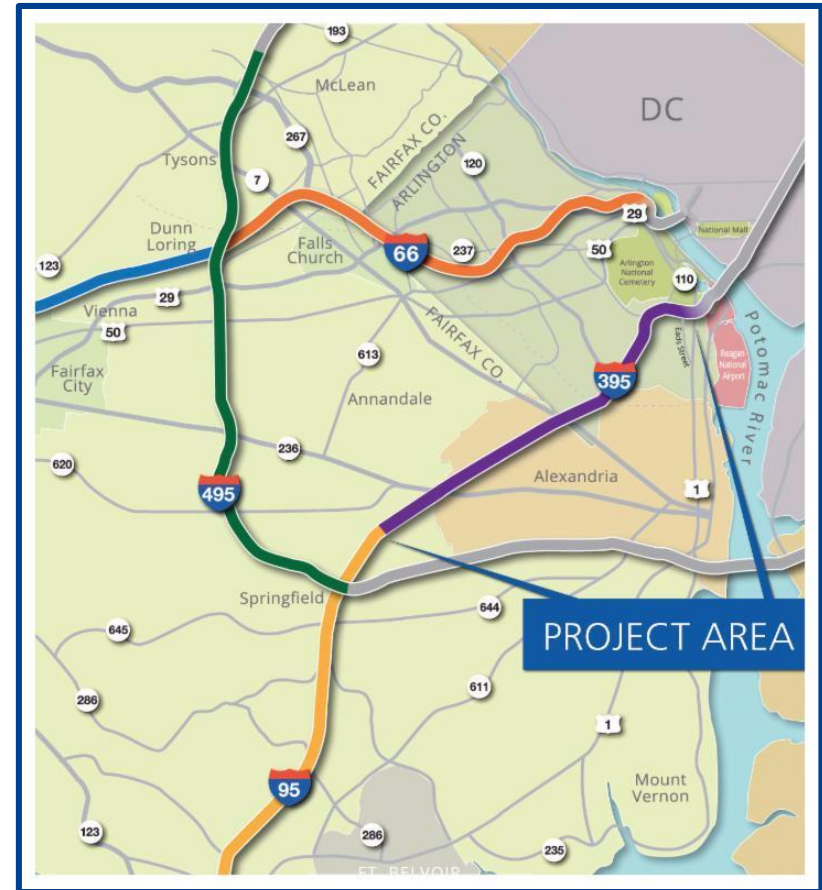
# Key Milestones

Activities	Dates
Environmental Assessment Completed	Spring 2017
Issue Design Build RFP for Widening	Spring 2017
Start Initial Multimodal Projects	By Summer 2017
Award Design-Build Contract for Widening	Late 2017
Begin Tolling	Late 2017
Final Noise Analysis	Spring 2018
Begin Widening Construction	Spring 2018
Open New Eastbound Lane	Late 2020



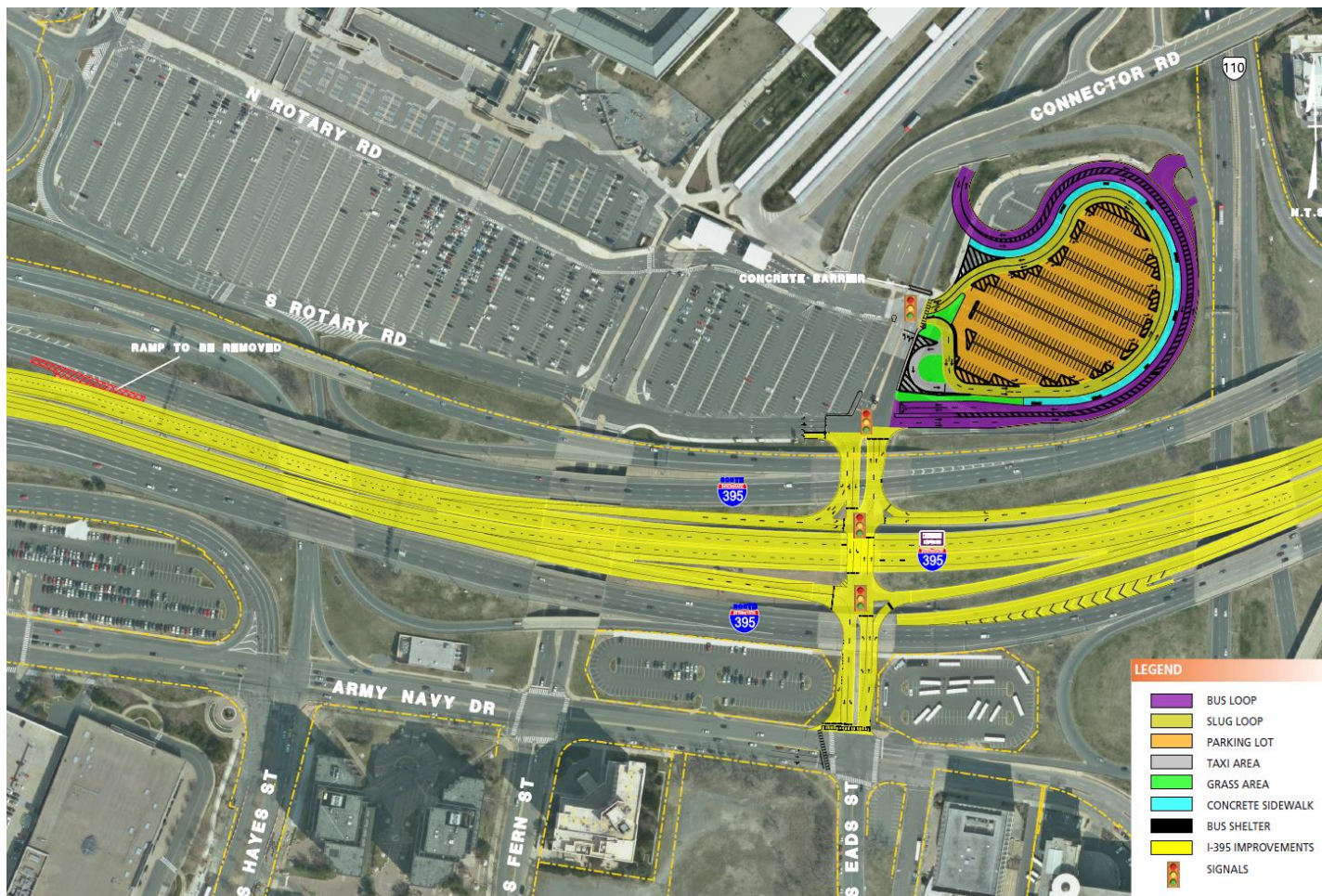
# 395 Express Lanes Project Scope

- Expand and convert the two existing reversible High Occupancy Vehicle (HOV) lanes to three managed High Occupancy Toll (HOT) or Express Lanes for approximately eight miles from Edsall Road to the vicinity of Eads Street near the Pentagon
- Provide improved connections between the proposed I-395 Express Lanes and Eads Street
- Install signage, toll systems, and an Active Traffic Management System from Edsall Road to DC
- Provide sound walls
- Provide \$15M Annual Transit Payment





# Eads Street Interchange and Pentagon Multimodal Improvements



# Public Outreach: What's Next?

## Stakeholder Outreach: Ongoing

- Briefings to elected officials and localities
- Coordination with key stakeholder groups
- Commuter Fairs at major employers (Pentagon, Navy Yard): Spring 2017

## Pre-Construction Outreach: Spring/Summer 2017

- News releases
- Stakeholder outreach (electronic notifications)
- Direct-impact homeowner outreach (letters, briefings to HOA's and civic groups)
- Construction kick-off
- What to expect during construction
  - Promotion of alternative commuting strategies
  - Information on improvements and changes



## Key Milestones

Activities	Begin Dates
Public Meetings and Hearings	October 24 and 26, 2016 October 27 (395 Widening) November 30, 2016 December 1, 2016
Comprehensive Agreement – 2 <sup>nd</sup> Amendment	February 2017
Environmental Assessment (395 Express) Categorical Exclusion (395 Duke to Edsall Widening)	February 2017
Early Work	February – June 2017
Financial Close	June 2017
Begin Construction	Spring 2017
Project Completion	2020



**THANK YOU**



Virginia Department of Rail and Public Transportation

# Unlocking Congestion in Northern Virginia

Northern Virginia Transportation Authority

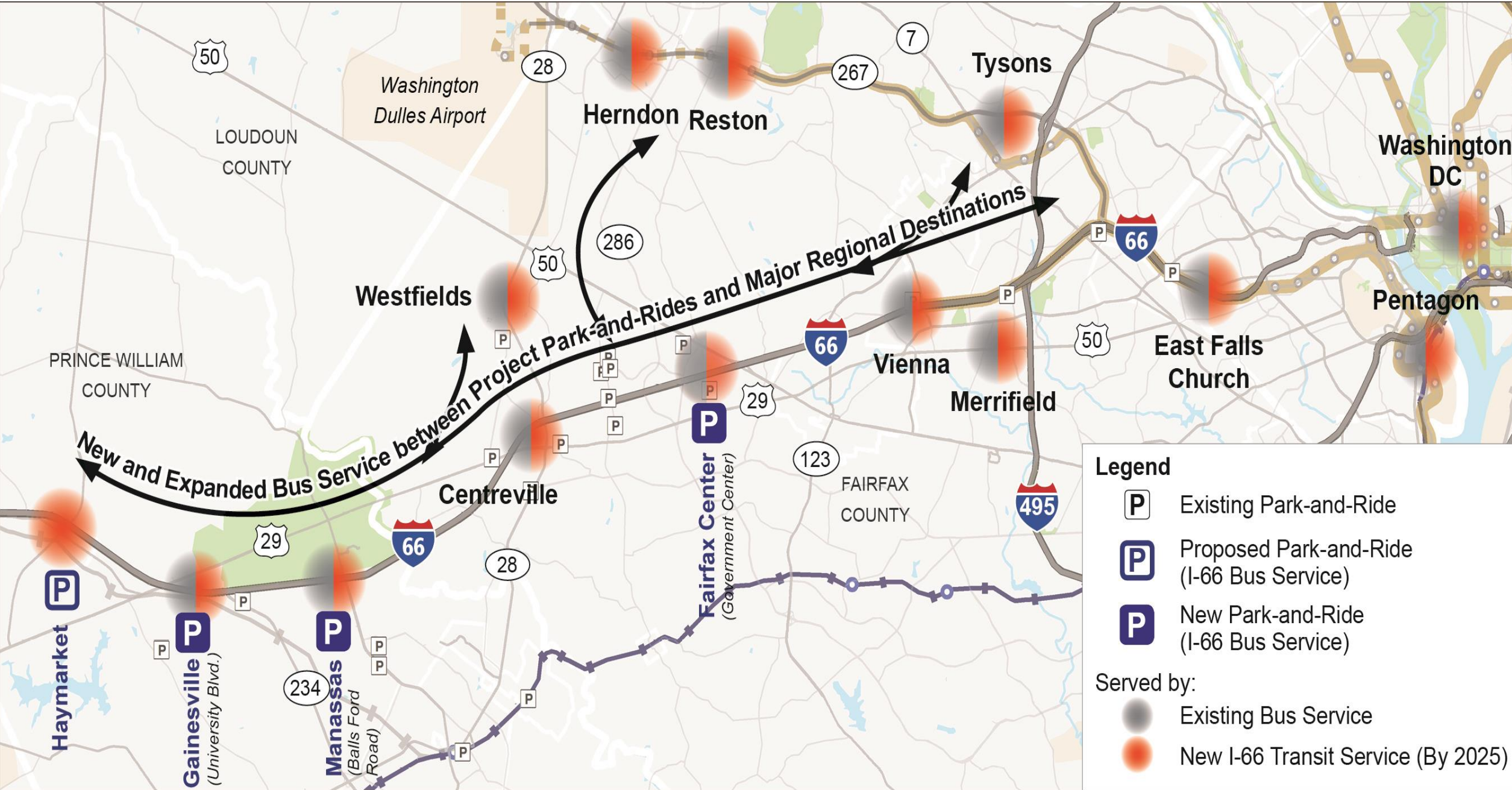
March 23, 2017

**Jennifer Mitchell**  
Agency Director

# I-66 Outside the Beltway



- Concession agreement with Express Mobility Partners includes \$800M over the next 50 years to support enhanced transit service in the I-66 corridor
- Annual transit payments will support new and enhanced point-to-point, peak period commuter bus services (including both capital & operating expenses)
- Services will originate at new and expanded Park & Ride lots in Fairfax and Prince William Counties with service to:
  - Washington
  - Arlington
  - Tysons
  - Pentagon
  - Dulles Airport area
  - Metrorail



# I – 66 Outside the Beltway



- New transit services:
  - Utilize new I-66 Express Lanes to ensure reliable trip times
  - Operated by Fairfax Connector and PRTC
  - Flexibility to optimize services over time based on performance measures
- 2022: New transit services begin operation
- 2025: 13 new/expanded commuter routes with up to 10,000 forecasted daily riders
- 2040: 20 new/expanded routes with up to 13,400 forecasted daily riders

# I – 66 Inside the Beltway



- Allocation of toll revenues to fund new and improved travel choices that include transit, TDM, bicycle, pedestrian and roadway options
  - Tolling to begin in December 2017
- NVTC to choose projects for funding with toll revenues
  - \$9.8 million initial Multimodal Program of 10 projects underway
- CTB must approve projects for funding with toll revenues



# I-95/395 Express Lanes



- Concessionaire (Transurban) committed to annual transit payment beginning in 2019
  - \$15 million initially with annual escalation
- I-95/395 Transit and TDM Study by DRPT
  - Comprehensive set of transit and TDM enhancements for the corridor that could be funded with annual transit payment
  - Developed in partnership with key stakeholders
- Commonwealth to determine the process for selecting projects and allocating funds from the annual transit payment



# Unlocking Congestion

- Unlocking congestion requires a commitment to all modes of transportation
- Role of transit solutions in major corridor projects is critical and transformational
- Commitment of toll revenues to transit payments and multimodal programs enables the Commonwealth to provide transportation options that otherwise may not have possible

